

Groundwork Lawrence's New Year's Eve Celebration and Lantern Parade

As this edition goes to print, on New Year's Eve, Groundwork Lawrence will host a Lantern Parade through the historic North Canal Mill District.

Last year, the event drew more than 100 people for a festive evening of lantern-making, art and poetry, and this year's event promises to be even bigger. The Parade route from the Essex Art Center to the Lawrence Heritage State Park will be lit by more than a hundred recycled soda-bottle lanterns made by Lawrence youth, and eighteen local artists have created one-of-a-kind lanterns to be raffled off on New Year's Eve.

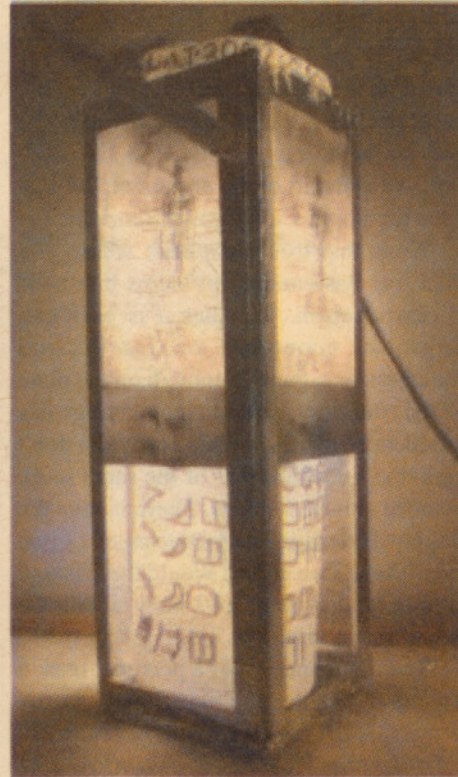
The artists hail from Lawrence, Andover, Haverhill, Dracut, and surrounding towns, and they range in age from six to over sixty. Their work includes lanterns made from wood, cast paper, glass, ceramics, and recycled metal. Each piece is unique, and together they offer a quirky and upbeat collection of art to celebrate the New Year.

The program for December 31st includes a lantern-making workshop at the Essex Art Center, a reception and children's storytelling with Mayor Sullivan, and poetry reading with the Robert Frost Foundation. All of these events are free and open to the public. The Lantern Parade is the only First Night celebration in the Merrimack Valley, and highlights Lawrence as an emerging center for the arts. Three of the participating artists (Barbara Fletcher, Terry Bastian, and



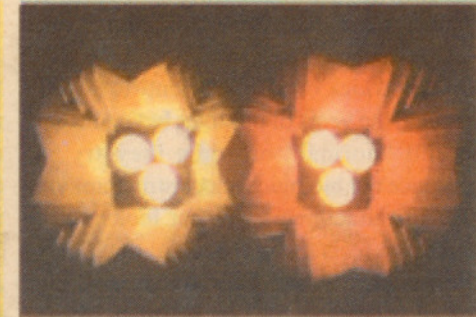
Featured Artist: Barbara Fletcher
Bird Lantern

Cast paper, approx. 15"H by 10"W by 6"D
Barbara Fletcher earned a BFA in commercial art from Syracuse University. She began her exploration of paper casting at Haystack Mt. Craft School in Maine, where she first learned papermaking in the mid-1980s. After taking fantasy illustration at the Rhode Island School of Design, a theme of fantasy animals began to develop in her work. Barbara's castings utilize both two- and three-piece molds and her pieces range from small ornaments to larger 3D work. Highlights of her casting method involve recycled fibers and simple but effective resist techniques for creating texture and color on the paper surface. Her work is in many private and public



Terry Bastian

Light 2002: New Ideas from the Past
Metal, paper, approx. 24"H by 6"W by 6"D
Light 2002 is a created space for poets and thinkers. Look inside or try to read the writing as you approach the artifact, it is only a simple tool to "see" an idea! This is visionere #18, "New Ideas from the Past". The feather is a personal and ancient symbol for the worth of a soul. The letters are both ancient and future type and script. The key



Michael Lafosse

Origami Lanterns
Handmade Paper, each piece approx. 3"H by 6"W by 6"D



center for the arts. Three of the participating artists (Barbara Fletcher, Terry Bastian, and Darlene Day) have studios in the mill buildings along the Parade Route.

This year, the funds raised through the lantern raffle will be used to support Groundwork's "vacant lots to parks" program, building on the success of the Reviviendo Playground, a beautifully landscaped park on a formerly vacant lot in the North Common neighborhood. With more than 1000 vacant lots in the City of Lawrence and a severe shortage of safe play areas for kids, Groundwork has ambitious plans for replicating the success of the Reviviendo Playground on many more lots across the city.

The sale of lantern raffle tickets will help support this effort. "The Lantern Parade is an important part of our mission to build community through public events that highlight Lawrence's parks and waterways," says Maggie Super, Associate Director of Groundwork Lawrence.

Support for the Lantern Parade is provided by local businesses including Jackson Lumber, Sir Speedy, David's Electric, and Tripoli Bakery.



Rob Millard

Noguchi-inspired Lantern
Wood and paper, approx. 24" H by 18" W by 12" D



Jurg Siegenthaler

Collage Lantern
Wire and painted metal, approx. 24" H by 10" W by 5" D

texture and color on the paper surface. Her work is in many private and public collections. Installations include St. Margaret's Hospital for Women and Children's Hospital in Boston. This year her work was featured in the books "Papermaking for the First Time" by Rhonda Rainey and Arnold Grummer's "Complete Guide to Paper Casting." You can get in contact with her by one of the following ways:

Barbara Fletcher, 60 Island Street, Lawrence MA 01840. Phone 978 688-8713. Email Barbara@paperdimensions.com

for the worth of a soul. The letters are both ancient and future type and script. The key to understanding is the here and now. The light bulb is stolen; the rest is debris from the trash and metal, tape, parchment, ink and idea.



Myleida Maldonado

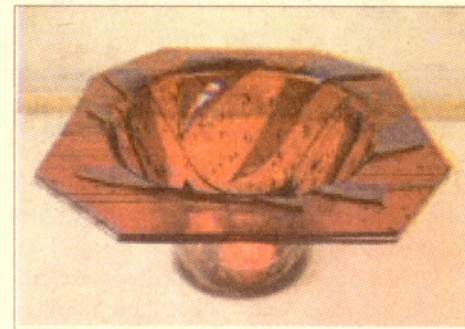
Pink/Red Tissue Paper Lantern
Wire and Tissue Paper, approx. 12" H by 6" W by 6" D

Myleida is a 15-year old student at Lawrence High School. She is in Ms. Gaumer's Homeroom Advisory group. Myleida has three brothers. Egardo is the oldest brother and Edgardo and Edison are twins. She likes the music of P. Diddy and Usher. Her favorite class is Glen Asup's science class.

Lynn C. Zeheb

A Flame of Remembrance
Cardboard, paper, metal, approx. 18" H by 10" W by 8" D

I didn't design this display with anything particular in mind. As what happens so often with art, I started to mess around with the material that was available to me at the time. After the project had gotten started it took on a life of its own. The life of memories just as soon forgotten, my memories of that fateful day. I was pleased as to how good the first piece, the "We Remember" candle came out and expanded on the idea. It feels good to get negative thoughts like 9-11 off your chest and since I'm not the most vocal person I must find other vents. This seemed like the perfect opportunity. My hope is that the money made from my memory of a family almost lost will aid Lawrence in repairing her waterways. I dedicate this display to the NYC firefighters, both those who gave their lives and those like my uncle Bob Heney who watched their friends and colleagues perish, but could do nothing to aid them.



Darlene Day

Glass Bowl
Glass, approx. 6" H by 10" W by 10" D