

# Reclaiming Vacant Properties Conference

---

## Fostering Citizens Greening Workshop

- Heather McMann, Groundwork Lawrence  
[hcmann@groundworklawrence.org](mailto:hcmann@groundworklawrence.org)
- Ashley Atkinson, The Greening of Detroit  
[ashley@greenofdetroit.com](mailto:ashley@greenofdetroit.com)
- Kari Smith, Parks & People  
[kari.smith@parksandpeople.org](mailto:kari.smith@parksandpeople.org)
- Christina Kelly, Genesee County Land Bank  
[ckelly@co.genesee.mi.us](mailto:ckelly@co.genesee.mi.us)

# Groundwork USA

## The Groundwork USA Network

26 communities across the United States and growing



As of 3/15/09

- Established
- GW Bridgeport (CT)
- GW Concord (NH)
- GW Dallas (TX)
- GW Denver (CO)
- GW Dona Ana (NM)
- GW Elizabeth (NJ)
- GW Gary (IN)
- GW Lawrence (MA)

- GW Milwaukee (WI)
- GW Minneapolis (MN)
- GW New Orleans (LA)
- GW Portland (OR)
- GW Providence (RI)
- GW San Diego (CA)
- GW Somerville (MA)
- GW Hudson Valley (NY)

- Under Development
- Anacostia DC
- Buffalo NY
- Richmond CA
- Springfield MA
- Wyoming County WV

- Interested Communities
- Charleston WV
- East Cleveland OH
- Easton PA
- Kansas City, KS/MO
- Oklahoma City OK

## What Groundwork Does

- **For people** - creating opportunities for people to learn new skills and take local action
- **For places** - creating better, safer and healthier neighborhoods
- **For prosperity** • helping business and individuals fulfill their potential



# Groundwork USA



GroundworkUSA®

*Changing places, Changing lives*



## Groundwork USA Network Accomplishments In 2008

(preliminary results: 14 of 16 GW Trusts reporting)

### Project Mix:

Total number of projects worked on	224
planning and design	88
construction and implementation	83
natural resource conservation	83
community planning initiatives	54
Total number of projects completed	142
Total number of programs delivered (e.g. youth, climate change, food and nutrition, community gardens, civic engagement, stewardship, storm water reduction)	77

### Physical Improvements: (total number)

Trees planted	862
Shrubs planted	2,217
Bulbs, perennials, flats of flowers & vegetables planted	10,805
Large amenities installed (e.g. benches, playgrounds, raised beds, rain gardens)	88
Small amenities installed (e.g. flower boxes, signs, trash cans, recycling bins)	92
Acres of brownfields/derelict land improved	67
Acres of open space/parkland improved	77.8
Miles of sidewalk, paths, trails built or improved	44.5
Sites cleaned up (one time)	133
Sites maintained (regularly)	212
Tons of trash/debris cleaned up	1,326.25
Feet of riparian habitat cleaned up, conserved or restored	114,320
People benefiting from projects (live within 500 ft or pass by daily)	365,987

### Integrating the Economy and the Environment:

Total number of businesses involved	406
Number of jobs created (full, part time, interns, summer)	150
Weeks of environmental and green job training (1 student for 40 hours = 1 week; 3 students for 20 hours each = 1.5 weeks)	472.25

### Benefits to Climate Protection:

Tons of CO2 sequestered through projects and programs	440
Tons of CO2 emissions reduced	251.2

### Community Involvement and Education:

Number of youth (<18 yrs) engaged in volunteer activities	6,385
Number of adults (>18 yrs) engaged in volunteer activities	2,507
Number of seniors (>60 yrs) engaged in volunteer activities	471
Total volunteer hours	26,940
Number of schools involved	80
Weeks of environmental education (1 student for 40 hrs = 1 week; 3 students for 20 hours each = 1.5 weeks)	1,660.75
Number of community events	145
Number of people engaged at events	10,376
New partnerships established	182
Partners engaged in projects and programs	362

### Leveraging Resources:

Public sector funding (federal, state, local)	\$1,629,793
Private sector funding (business, foundations, civic, private)	\$1,695,375
Value of donated goods/services (not volunteer time)	\$ 386,811

### Groundwork Network Highlighted Achievements

- GW Denver established a climate change program that engages volunteers to help their neighbors reduce energy consumption reducing \$ and CO2.
- GW Elizabeth completed a 4 + year effort to convert a small site brownfield into a pocket park.
- GW Hudson Valley took ownership of "the Science Barge", a floating environmental classroom that will serve 3000 students annually.
- GW Milwaukee built two rain gardens that provided job training for young adults and reduced storm water overflows in their neighborhood.
- GW Somerville engaged 1500 youth in environmental education, stewardship and improvements in their communities.
- GW Lawrence and GW Somerville were named *Conservationist of the Year* for improving urban environments in Massachusetts.
- GW Dallas partnered with Eagle Scouts to build trail signage and benches.
- GW Lawrence distributed 7000 lbs. of locally grown produce to Lawrence food pantries increasing access to fresh produce for low income families.

## The Groundwork Mission

To bring about the sustained regeneration, improvement and management of the physical environment by developing community-based partnerships which empower people, businesses and organizations to promote environmental, economic and social well-being.



# Groundwork Lawrence



Dr. Nina Scarito Park – Lawrence, MA

# Our Projects & Programs are designed to:

- Increase Opportunities for Physical Activity
- Increase Access to Healthy Food
- Improve the Quality of Our Air, Water and Land
- Support Biodiversity
- Reduce Energy Consumption



## Some of GWL's Accomplishments

- \$5+M of capital improvements to parks & public spaces
- \$3.2 M of projects in the pipeline
- 370+ acres of public parkland improved (*75% of City's total green space*)
- 4,900 youth & 4,800 adults engaged in volunteer clean-ups and stewardship
- 80 tons of trash removed from the Spicket River
- 360 trees, 492 shrubs, and 3,150 bulbs and perennials planted
- \$40,000+ fresh locally-grown produce provided to low-income families annually







Lawrence, Massachusetts: View looking east over the Great Stone Dam

# Lawrence in Context

## Demographics

- 30 miles north of Boston
- One of the poorest & most heavily Latino cities in NE
- Population approximately 70,000
- Per capita income of just \$14,753
- Over 25% of families below poverty line
- Homeownership rates 35% citywide (*1/2 state average*)
- Unemployment rate 14% (*twice state average*)
- 37% of residents hold HS degree
- Young population (~30% under age 24)
- Diet and lifestyle-related disease rates soaring
- Highest rates of foreclosure in MA

# Projects & Programs Based on Community Mandate

- Community Meetings
- Design Charrettes
- Open Space and Recreation Plan
- Neighborhood Summit
- Partnerships with other community groups



# Community Food Programs

- Lawrence Downtown Farmers Market
- Community Supported Agriculture
- Share-a-Share CSA Subsidy and Fresh Food Donations
- Community Gardens



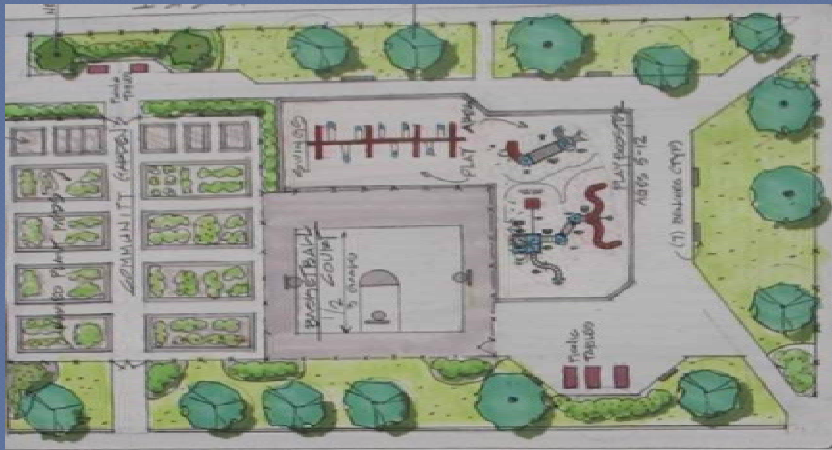
# Youth & Community Education Programs

- Green Team
- Schoolyard Gardens
- Healthy Habits and Healthy Living workshops



# Environmental & Open Space Programs

- Park development and design
- Alleyways and Urban Trails network
- Volunteer neighborhood and river cleanups
- GreenStreets tree planting initiative
- Spicket River Greenway



## Brook St. Site (before)



Dr. Nina Scarito Park – Lawrence, MA

## Scarito Park-After remediation and park construction







Community Gardens- Scarito Park

# Spicket River Greenway



## Creating the Spicket River Greenway

The developing Spicket River Greenway, envisioned by our community as a three-mile long "emerald bracelet" of green spaces and walking paths connecting parks and neighborhoods, is comprised of a series of infrastructure, program, and stewardship investments made by Groundwork Lawrence and the City of Lawrence that are helping to meet the many challenges facing our community. Derived from a multi-year collaborative planning effort led by Groundwork Lawrence, the Greenway vision was identified first in 2001 and continues to serve as a guiding strategy for achieving multiple goals associated with creating a more healthy community, including river restoration, neighborhood revitalization, civic engagement, improved public health, enhanced transit and walkability, better air quality, and increased recreational opportunity. Since 2002, Groundwork Lawrence has engaged over 3,500 people in clearing 77 tons of debris and over 1,000 trees from the banks of the Spicket River. At the same time, Groundwork Lawrence has served as project manager with the City of Lawrence Community Development Department to fundraise and leverage public dollars dedicated to the design and construction of new parks along the Spicket River Greenway: Scarito Park—the City's first brownfield-to-open space project completed in 2006, and Misserville Park and Kennedy Playstead, both constructed in 2007. Manchester Street Park is the newest jewel on the bracelet—the former brownfield site at Stevens Pond comes on line in 2009. Additionally, this partnership has yielded greenway design guidelines, survey work, and preliminary design plans for the trails that will ultimately connect these new riverfront green spaces. In sum, the Spicket River Greenway has inched from vision to reality thanks to over \$5.5 million in State and local funds invested on Spicket River park projects, with an additional \$2 million of planned riverside park and trail improvements in the pipeline.

Groundwork Lawrence, Inc. is a locally-based 501(c)3 non-profit organization working to create sustainable environmental change through community-based partnerships. Groundwork's mission and operations are premised on the understanding that environmental conditions are inextricably linked to the economic and social health of a neighborhood. As a consequence, Groundwork is committed to "changing places and changing lives" through on-the-ground projects that help to transform local communities. To accomplish this, Groundwork leads and supports a variety of partnership-driven efforts that bring together the public, private and non-profit sectors to solve complex environmental problems and sustain a long-term vision for neighborhood change and renewal.



# Spicket River Greenway

- 11 city parks and a historic cemetery are located within 1/4 mile of the Spicket River
- 12 schools are located within half a mile of the Spicket River
- Potential for 15+ acres of new riverfront parkland on already vacant land
- Greenway could encompass approximately three miles of riverfront walking/cycling trails

# The Covanta Site-Before and Site Plan



Manchester Street Park



## Examples of Vacant lots in the City



## Examples of Vacant lots in the City



## Examples of Vacant lots in the City



## Alleyway and Vacant Lot Cleanups





## Alleyway and Vacant Lot Cleanups



## Alleyway Reclaimed-Orchard and Garden Alleyway



## Construction of Alleyway Garden-Union Mechanic Community Garden



## Union Mechanic Alleyway Community Garden



## Union Mechanic Alleyway Community Garden

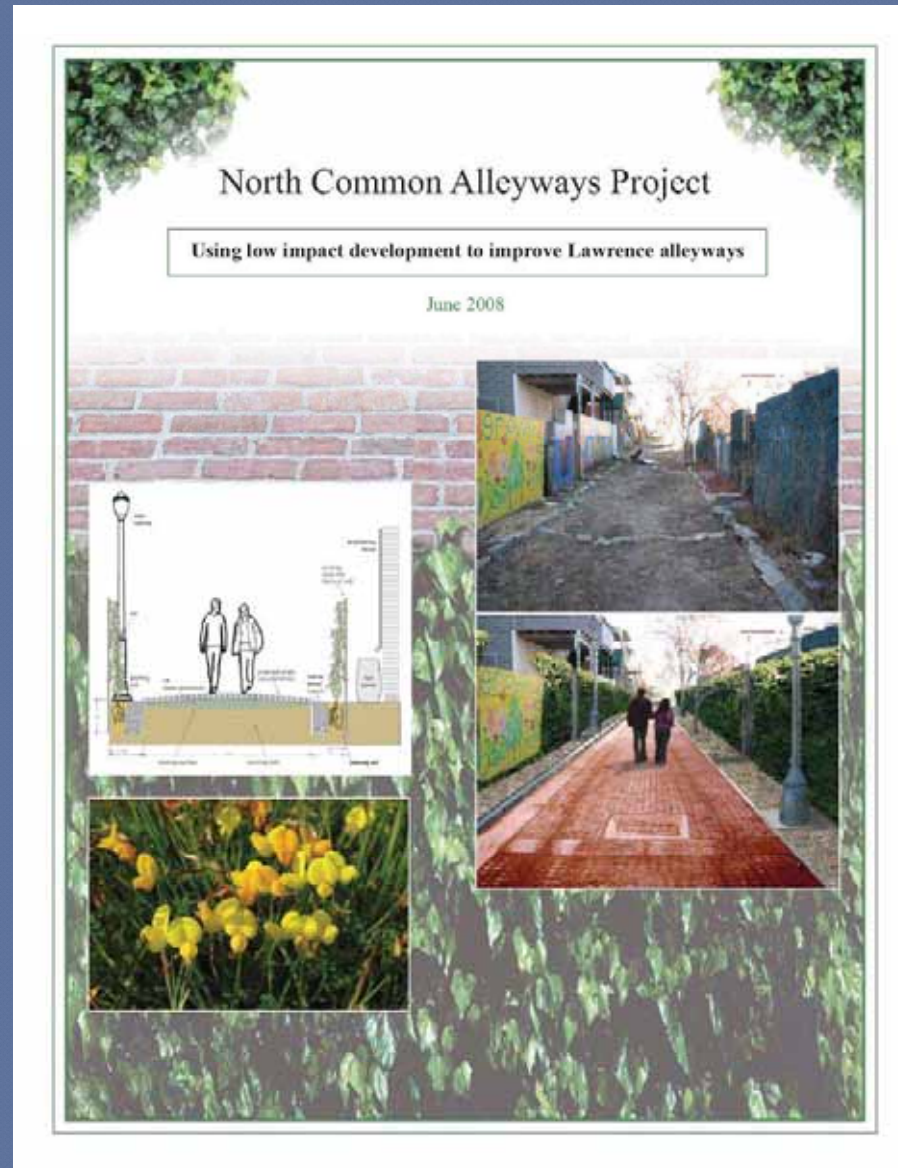


*Manny and Victor-Stewards in the Garden*

## Union Mechanic Alleyway Community Garden



# Using LID to Improve Lawrence's Alleyways



## Changing Places ~ Changing Lives

Groundwork USA - [www.groundworkusa.org](http://www.groundworkusa.org)

Groundwork Lawrence - [www.groundworklawrence.org](http://www.groundworklawrence.org)

