

## History of Den Rock Park

Den Rock Park is a 120-acre wooded preserve that includes walking trails, a granite rock face with fissures perfect for technical climbing, scenic overlooks, and access to the Shawsheen River. The park is owned by the City of Lawrence, the Town of Andover and the Merrimack River Watershed Council. The land was first purchased for a cemetery in 1877 but was designated as a city park in 1896. In the 1930s, the park was improved by workers with the Civilian Conservation Corps, who installed rock steps, two amphitheaters, a boardwalk, and numerous trails. In 1995 an Andover Town Meeting approved rezoning property abutting the park from industrial to residential. Subsequent residential development produced significant additional protected open space on the park's western border. In the summer of 2003, the Student Conservation Association created an attractive stone pathway leading from Andover's Stirling Street into the park. In 2004, the City of Lawrence and Groundwork Lawrence built a new visitor parking area at the Route 114 entrance to the park. In the summer of 2005, the City of Lawrence and Groundwork Lawrence implemented the first phase of trail improvements and installed new trail signage throughout the park. Today, the park serves as a recreational amenity for the region and attracts hundreds of visitors throughout the year.

## Exploring Nature in the Park

Abundant elevation changes, frequent rock outcroppings, the Shawsheen River, a beaver pond, and a natural wooded setting make Den Rock Park an excellent location for hiking, rock climbing, and nature observation. For bird-watchers, an abundance of local species can be found in the park, including Great Blue Heron, King Fisher, Red Tail Hawk, Blue Jay, and Nut Hatch. A variety of woodland animals also call the park their home, including deer, fox, coyotes, beavers, and woodchucks. Native plant species include White and Red Oak, Gray Birch, Scotch Pine, White Pine, Poplars, Red Maples, and a variety of ferns. The Shawsheen River (which has been cleaned up in recent years through the efforts of the Shawsheen River Watershed Association) and the beaver pond are an excellent spots for nature observation.

## Park Rules & Regulations

- **KEEP IT CLEAN.** Den Rock Park is a carry-in, carry-out facility. Please help keep it clean by bringing cans, bottles, wrappers or other trash with you when you exit the park.
- **NO FIRES.** Camp fires are not permitted at Den Rock Park.
- **NO MOTORIZED OR OFF-ROAD VEHICLES.**
- **KEEP DOGS UNDER CONTROL.** Please keep dogs leashed or closely supervised at all times.
- **NO ALCOHOL.** Alcoholic beverages are not permitted in City of Lawrence parks.
- **NO OVERNIGHT CAMPING.** Anyone wishing to camp overnight at Den Rock Park must seek written permission from the Department of Public Works, 200 Common Street, Lawrence.
- **NO HUNTING OR TRAPPING.**

## Safety Guidelines

To ensure your safety while visiting the park, please observe the following guidelines:

- **Do not feed animals.**
- **Stay on trails to avoid ticks and poison ivy.**
- **Do not smoke anywhere in the park.**
- **Do not pick or collect plants.**

## Park Hours

Den Rock Park is open every day from dawn to dusk.

## Park Activities

Activities and excursions are organized by the Friends of Den Rock Park, an ad-hoc committee that includes the City of Lawrence, the Merrimack River Watershed Council, Groundwork Lawrence, the Lawrence Heritage State Park, Lawrence Environmental Action Group, Lawrence Grassroots Initiative, and the Lawrence Trails Committee. For more information on any of these groups, contact Groundwork Lawrence at 978-974-0770.

*Information in this brochure is courtesy of the Andover Trails Guide, the 2004-2005 City of Lawrence Open Space Plan, and Groundwork Lawrence. This brochure was produced by the City of Lawrence and Groundwork Lawrence with funding from the Massachusetts Executive Office of Environmental Affairs. Graphic design by David Curran.*

# Den Rock Park



## Trail Guide





- Great Blue Heron Trail
- Nut Hatch Trail
- Red Tail Hawk Trail
- King Fisher Trail
- Park Boundary
- P Parking

495

Shawsheen River

114

BOSTON & MAINE RAILROAD

P

STIRLING STREET

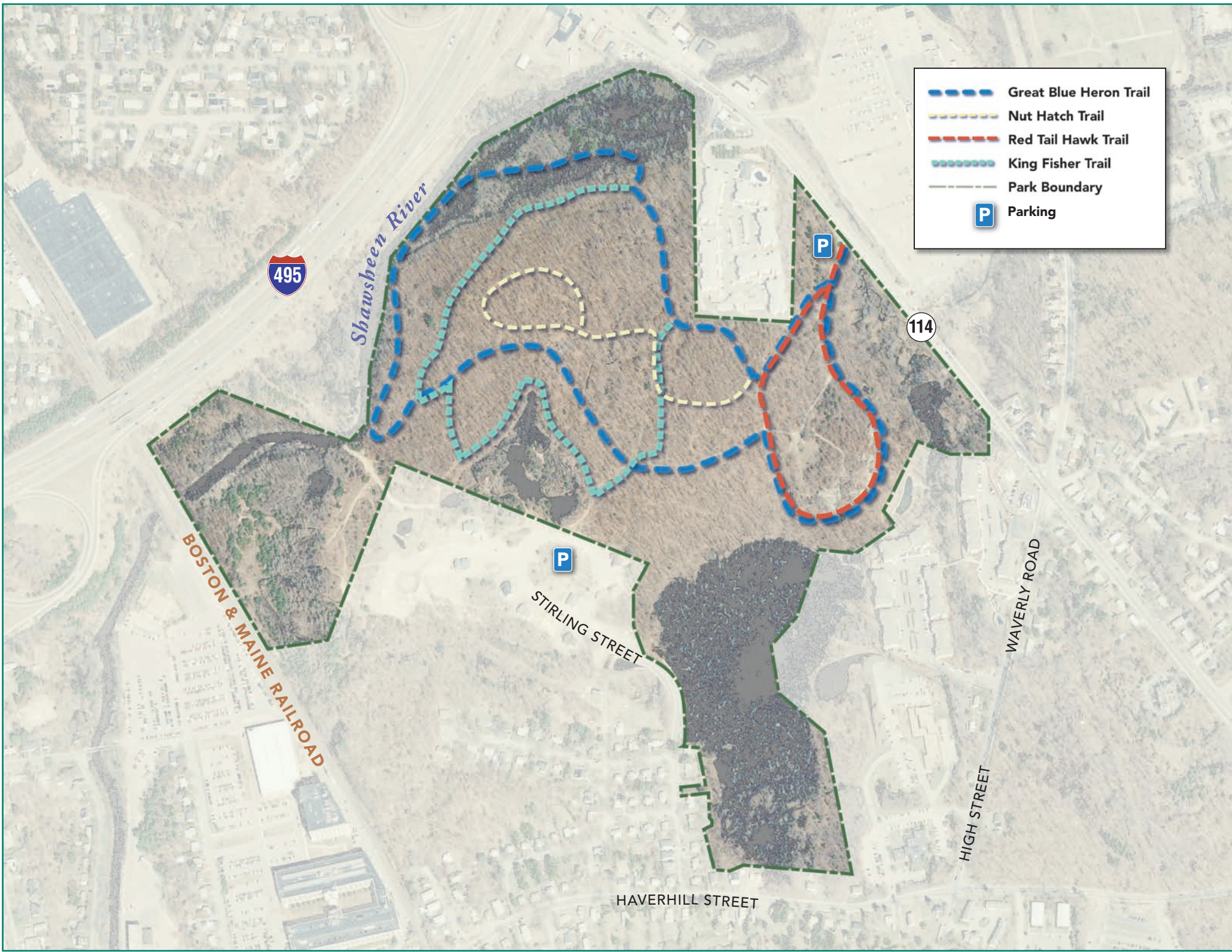
HAVERTHILL STREET

HIGH STREET

WAVERLY ROAD

P





- - - - Great Blue Heron Trail
- - - - Nut Hatch Trail
- - - - Red Tail Hawk Trail
- - - - King Fisher Trail
- - - - Park Boundary
- P Parking

495

*Shawsheen River*

*BOSTON & MAINE RAILROAD*

P

STIRLING STREET

HAVERTHILL STREET

114

P

WAVERLY ROAD

HIGH STREET